

InterpretAir™

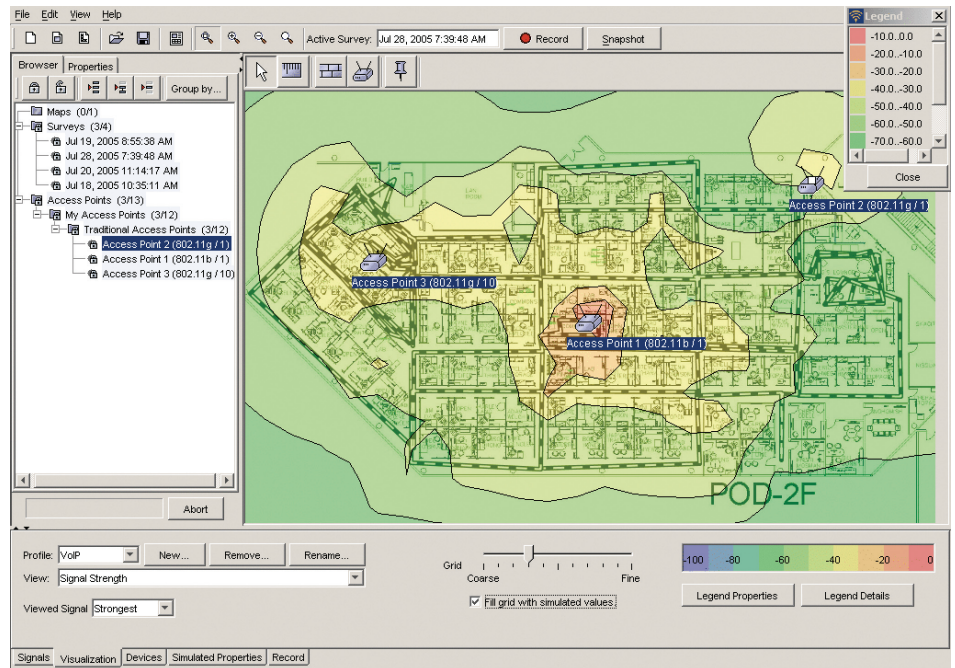
WLAN Survey Software

InterpretAir provides wireless LAN installers and network professionals with the vision they need to plan, deploy, verify, and document their 802.11a/b/g WLAN networks. InterpretAir is a wireless site survey tool and much more; it provides visualization of RF health metrics, greatly simplifying WLAN environment analysis and enabling performance tuning. Discover where and why WLAN network performance is sub-optimal and take action; proactively addressing problems that could affect mobile application performance.

InterpretAir software includes the following powerful features:

Comprehensive wireless LAN site survey

- Minimize or eliminate co-channel interference
- Identify optimum locations for WLAN access points for new installations as well as network expansion
- Visualize radio frequency cell overlap to ensure seamless coverage
- Simulate access point and environmental variables and visualize impact on WLAN performance
- Easy-to-use, intuitive interface saves time and simplifies analysis



WLAN signal coverage map

Site map

Import a JPEG or PNG formatted image file into the InterpretAir application, quickly calibrate map scale, and begin your site survey in minutes. Collect real-time RF metrics to create an overlay illustration of wireless coverage over your site floor plan.

RF health

InterpretAir software takes RF site survey analysis to a new level by enabling visualization of multiple measurement criteria in a single view, simplifying analysis and accelerating decision making. Determine the performance metric minimum and maximum values for variables such as signal strength, signal-to-noise ratio, and AP overlap. Create multiple profiles that enable you to visualize how your WLAN is positioned to support various applications such as wireless Voice over IP or video. InterpretAir software provides a

graphical overlay over your floor plan that clearly illustrates where actual WLAN performance meets or does not meet your unique environmental and performance criteria.

WLAN security

Through the site survey process, InterpretAir software provides visualization of production access points, and enables you to visually identify and locate rogue and neighboring access points.

RF signals from production access points can penetrate and extend WLAN coverage beyond the office walls. InterpretAir software enables visualization of RF signals that extend outside of your facility.

Are your access points configured for encryption? InterpretAir discovers and reports access point security.

Advanced planning and network simulation

How will the wireless network perform? Simulate WLAN performance using InterpretAir software prior to installing any live wireless LAN equipment. Define environmental characteristics – such as wall construction materials, access point power configuration, and antenna selection – to view how subtle changes may affect WLAN performance before installing a single access point.

Verification and reporting

What did WLAN coverage look like when your access points were installed? Does the network perform as planned in the initial site survey? How does current performance compare? Physical changes in the enterprise can affect RF performance. The InterpretAir software integrated report generator automatically creates comprehensive site survey documentation that can be recalled for future analysis and comparison. Reports are generated in HTML which can then be used for web based delivery, or cut and pasted into your word processing application.

Keeping up with WLAN evolution

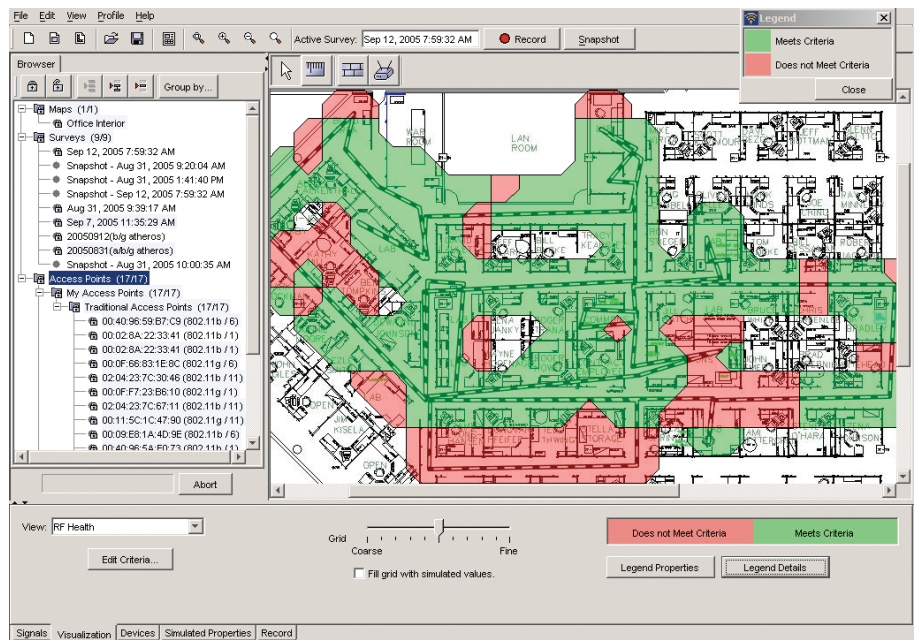
Wireless LANs are becoming mixed mode environments where 802.11a, and 802.11b/g networks co-exist. InterpretAir works with various optional WLAN network interface cards, providing visibility and planning capabilities across 2.4GHz and 5GHz frequencies.

Multiple language support

InterpretAir software fully supports multiple languages: English, French, German, Italian, Brazilian Portuguese, and Spanish. Multi-language support includes Windows-based user interface, user reports, help files, and user guide.

Free trial

InterpretAir is available for limited evaluation via electronic download from Fluke Networks' web site at www.flukenetworks.com/interpretair



RF health

System requirements:

- OptiView™ Series II Integrated Network Analyzer or laptop/tablet computer with Pentium® III series processor
- Operating System: Windows XP or 2000 professional
- Minimum 512 MB RAM
- Minimum 500 MB hard drive space available
- One (supported) wireless LAN network interface card
- Minimum of one WLAN access point for real-time analysis
- Electronic (JPEG or PNG) image file of facility to be surveyed

Ordering information

| Model | Description |
|------------------|--|
| INTAIR-LAP | InterpretAir CD includes application software and users manual. |
| IA-AA | Wireless Software Suite including: InterpretAir WLAN Survey software and AnalyzeAir™ Wi-Fi Spectrum Analyzer |
| ES2-PRO-INTAIR | EtherScope™ Pro Series II Network Assistant plus InterpretAir |
| ES2-PRO-IA-AA | EtherScope Pro Series II Network Assistant with InterpretAir and AnalyzeAir |
| OPVS2-IA | InterpretAir WLAN Survey Software, OptiView™ Edition |
| OPVS2-IA-AA | OptiView WLAN Software Suite, InterpretAir and AnalyzeAir, OptiView Edition |
| OPVS2-WLESS | OptiView WLAN Suite, WLAN Analyzer with InterpretAir and AnalyzeAir |
| GLD-INTERPRETAIR | Gold support |

Network SuperVision Gold Support

Sign up for our Gold Support plan and you'll enjoy outstanding privileges to support add value to your investment in Fluke Networks products. These include unlimited tech assistance seven days a week, 24 hours a day via phone or at our web site support center. Free software upgrades. Unlimited web based training and discounted pricing on instructor-led and custom on-site training programs. Access to our extensive Knowledge Base library of operation and application related technical articles. And Gold "Members Only" special prices and promotions. Some benefits are not available in all countries. See www.flukenetworks.com/goldsupport for more information.

NETWORK SUPERVISION

Fluke Networks
P.O. Box 777, Everett, WA USA 98206-0777

Fluke Networks operates in more than 50 countries worldwide. To find your local office contact details, go to www.flukenetworks.com/contact.

©2006 Fluke Corporation. All rights reserved.
Printed in U.S.A. 9/2006 2527139 D-US-N Rev C